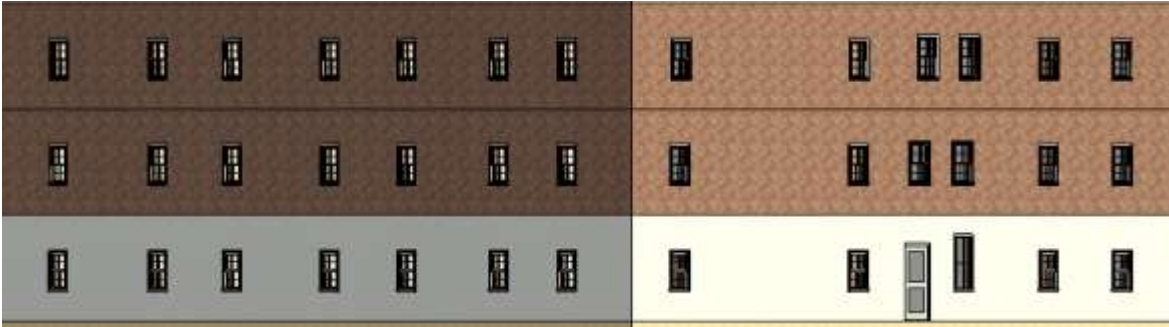
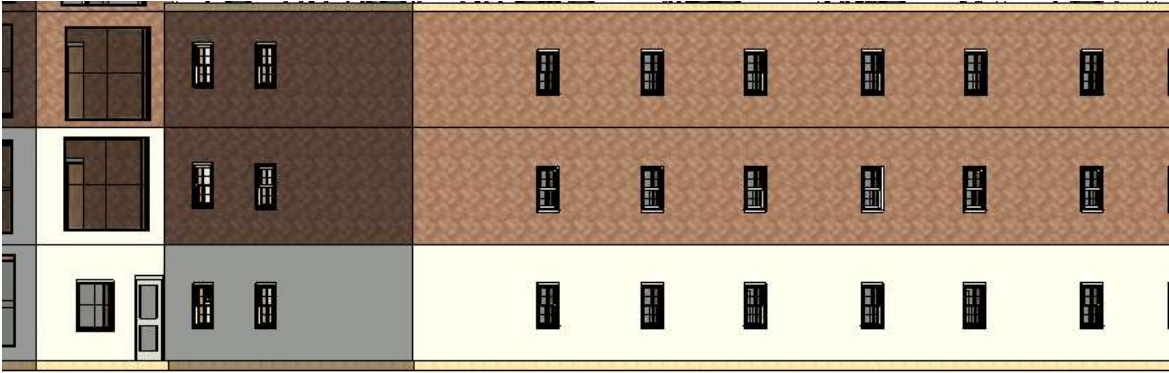
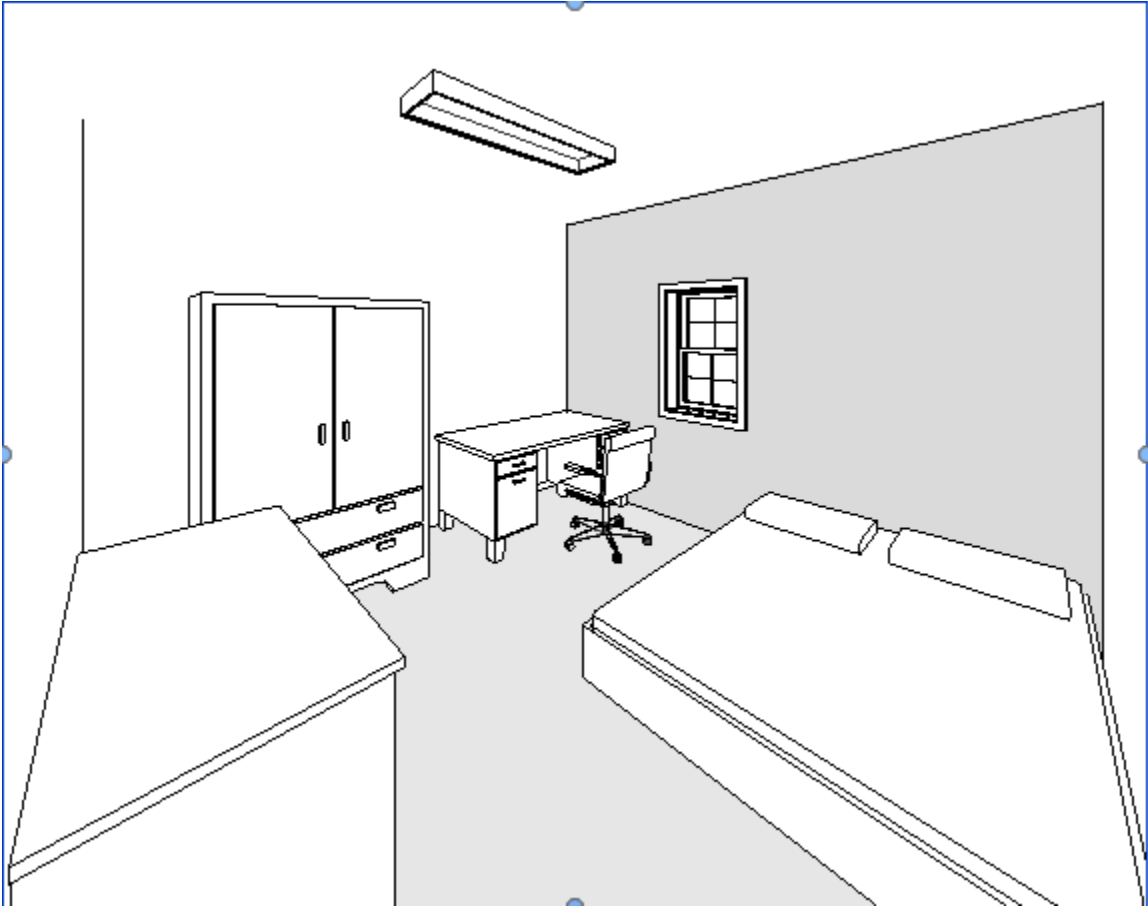
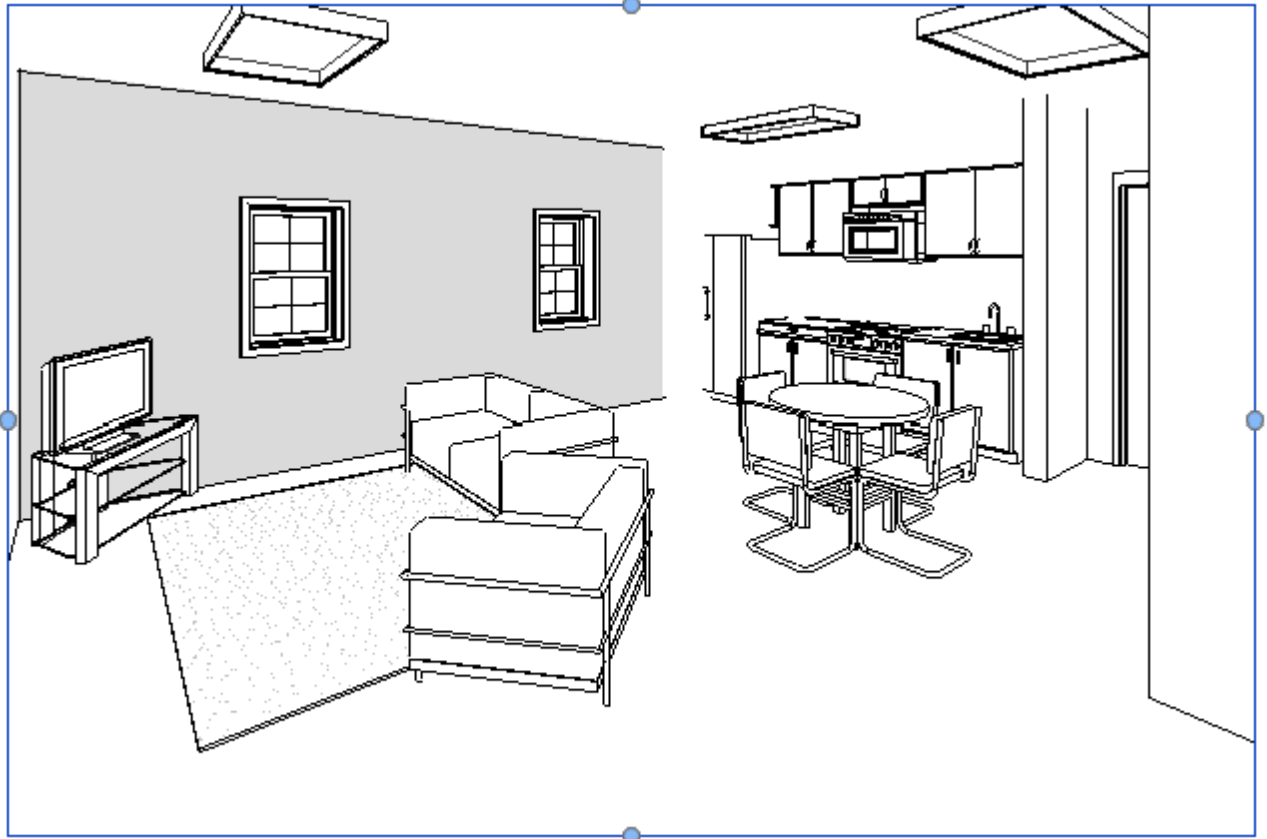


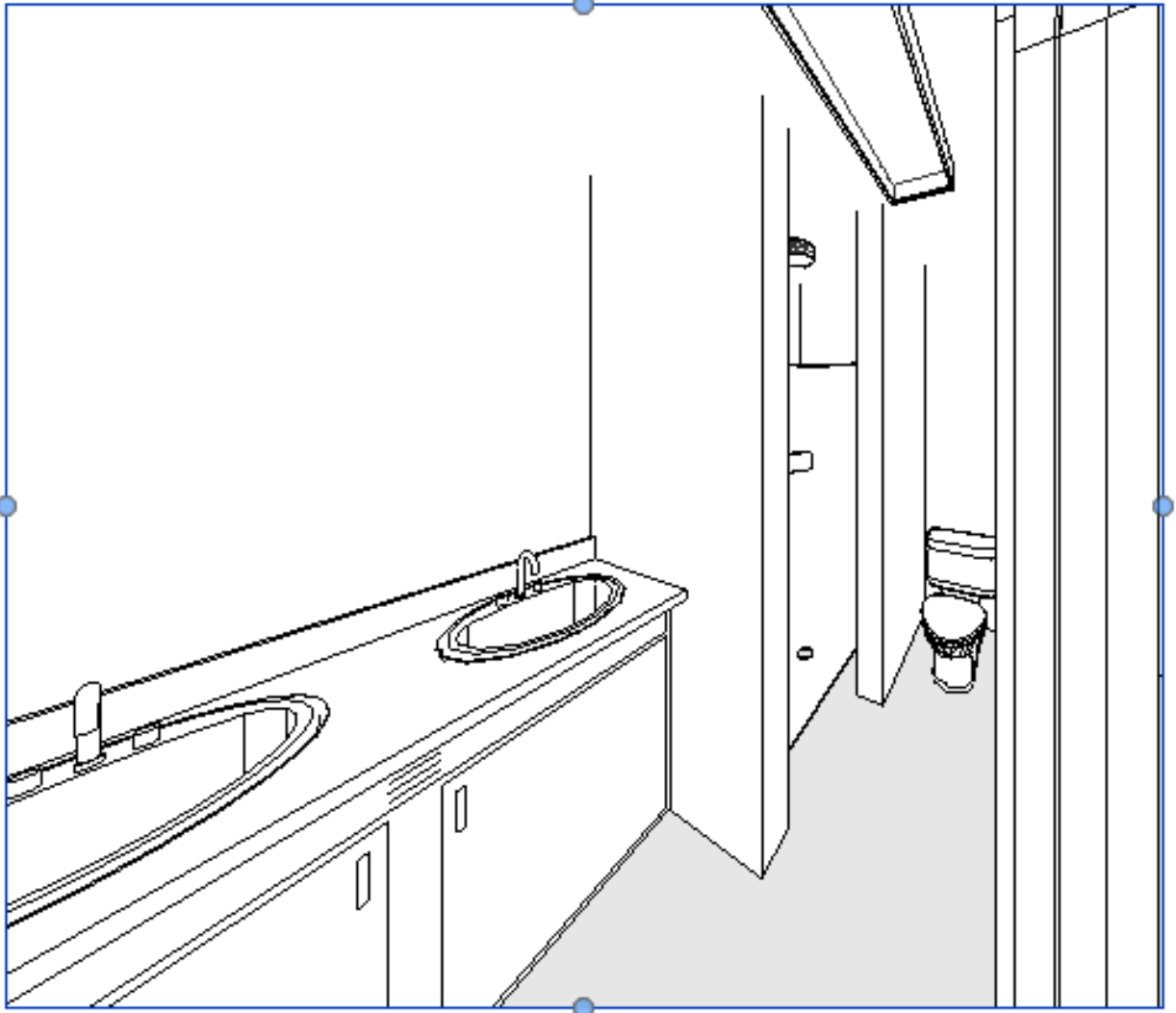
Exterior two-point



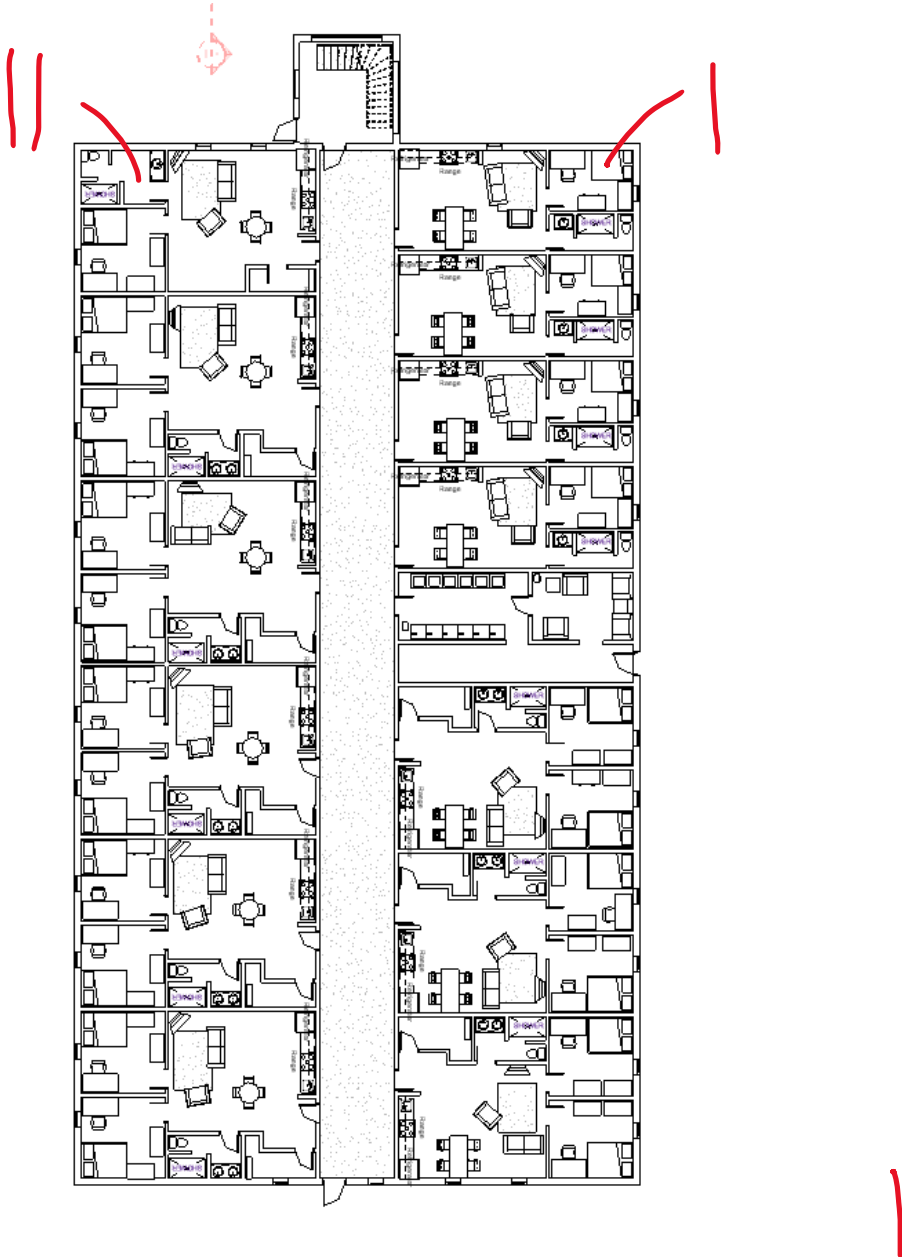
**Interior perspective**

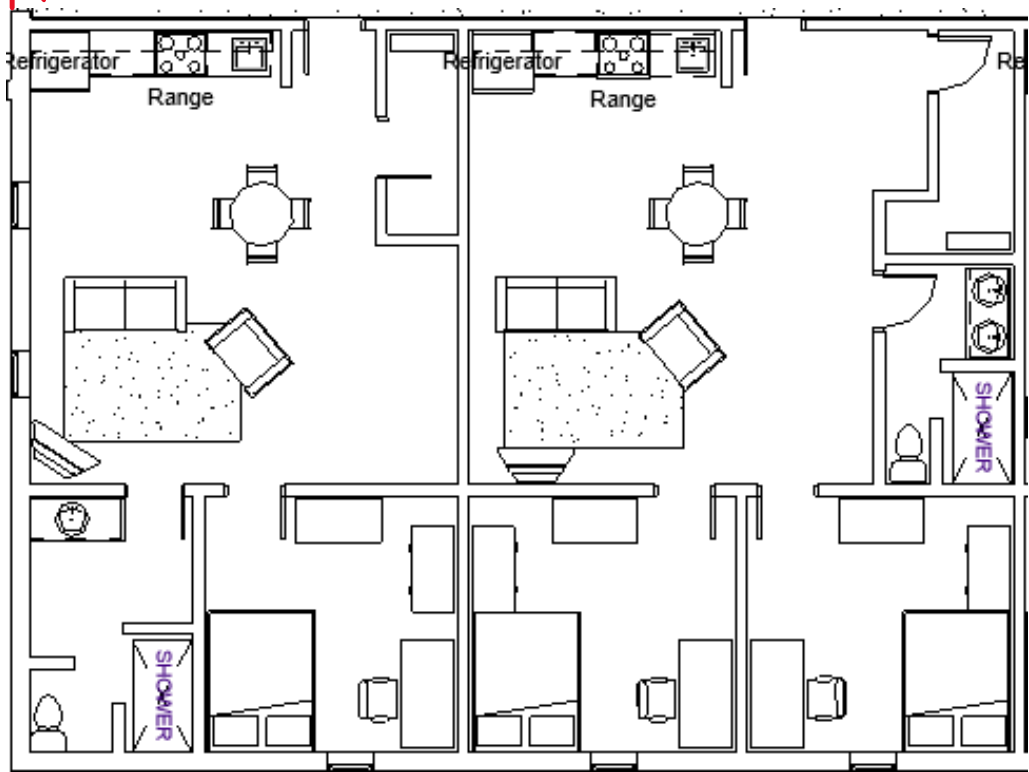
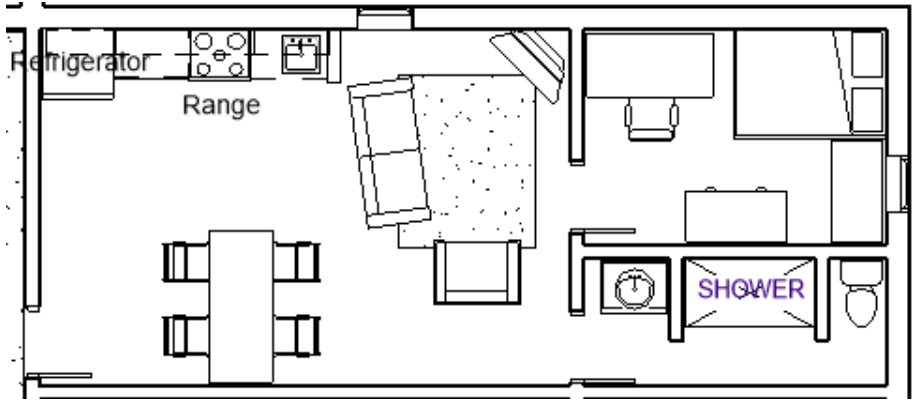




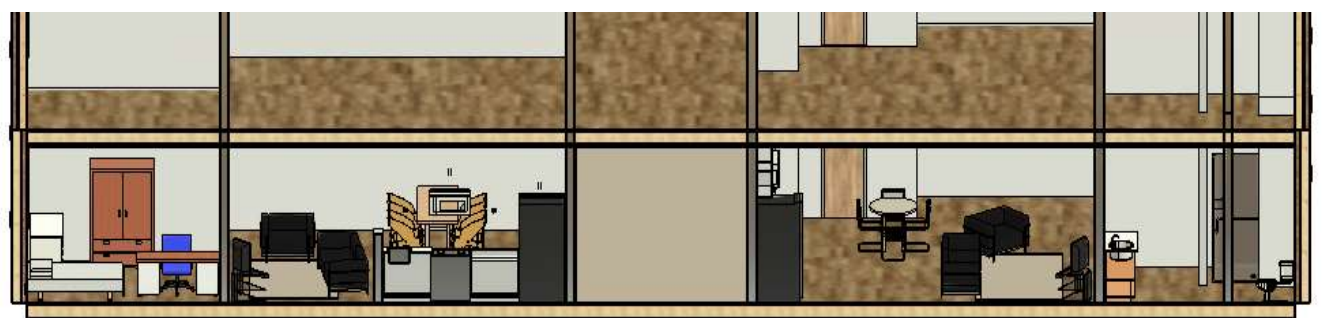


# Floor plans





Section drawing



## Description of Design

The design of my new apartment buildings, I wanted to keep with the theme of a majority of the buildings already on campus with the brick-and-mortar type of look. My buildings are made for mostly graduate students that are coming back to college years later, so they have a place to live while getting a higher education. I went with more of a cubbish shape to give those living in it a stable way of living [1]. I wanted to make sure people living in these apartments still felt stable while going back to college which, for some, was some of the most unstable they have ever felt. Also for the layout of all the rooms, I went with more of an open type of design so allow flow through the apartment and natural light where it might not be able to reach [6].

In between these buildings, I would have a sunken seating area so people can still enjoy the view on the first floor and not have them obstructed by those sitting outside [2]. I wanted the interior of my buildings to have a regular kind of organization so those living there do not get overwhelmed due to it looking slightly different than they would be used to [3]. The scale of everything seems slightly bigger than usual due to not wanting people to feel cramped walking through the hallways. I wanted everyone who lives there to feel like they have freedom to go where they want and not be forced to wait for others to pass by [4]. I made sure each chunk of room tried to be as sequentially rhythmic as possible. I liked how each section of the room looks different from others but can still hold the same number of persons [5].

[1] Part 2: Form slide 19

[2] Part 3: Form and Shape Slide 7

[3] Part 4: Organization Slide 12

[4] Part 6: Proportion and Scale Slide 10

[5] Part 7: Principles Slide 56

[6] Organic Architecture Slide 1-2

Site Plan

